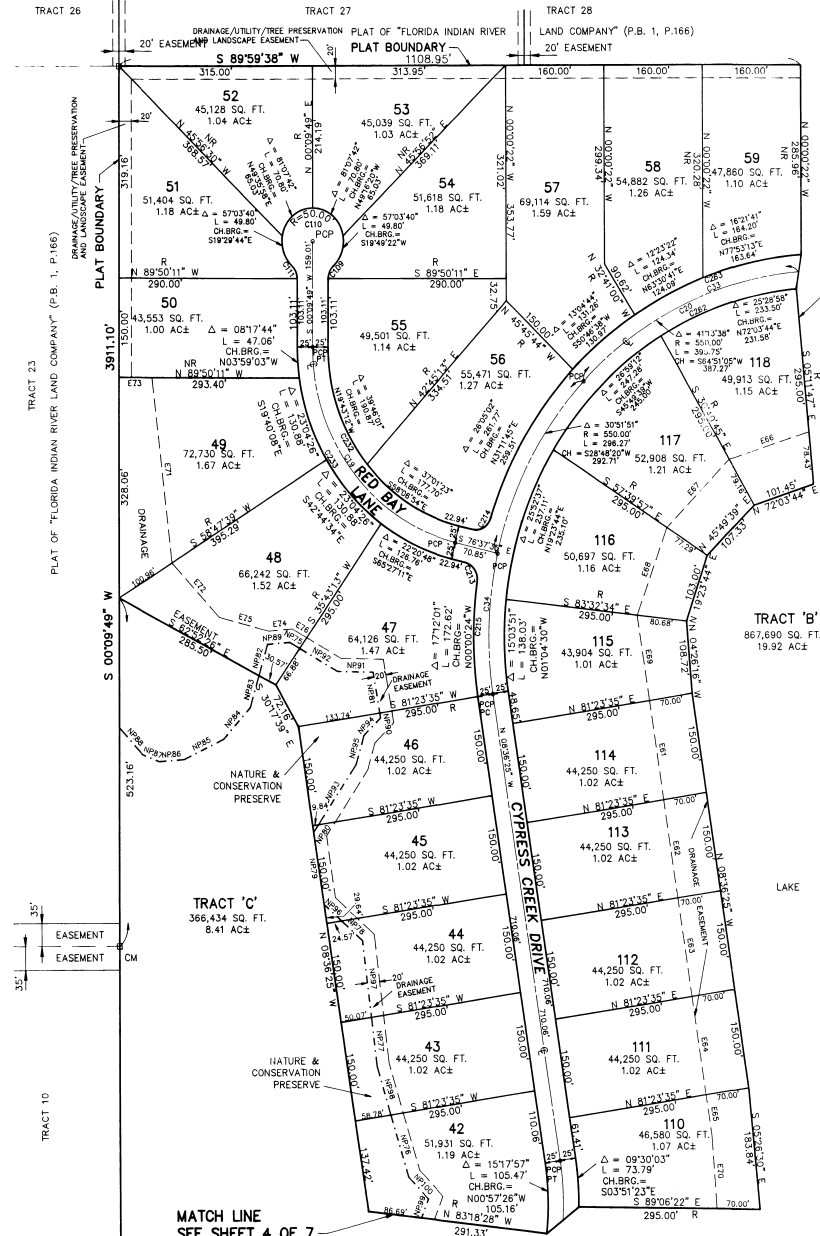


CYPRESS CREEK SUBDIVISION PHASE ONE

PLAT BOOK 38
AND PAGE 66
SHEET 6 OF 7

A REPLAT OF ALL TRACTS 3, 4, 5, 6, 11, 12, 13, 21 AND 22 AND PORTIONS OF TRACTS 2, 14, 15, 19 AND 20 "FLORIDA INDIAN RIVER COMPANY PLAT" AS RECORDED IN PLAT BOOK 1, PAGE 166 OF THE PUBLIC RECORDS OF BREVARD COUNTY, FLORIDA, IN SECTION 29, TOWNSHIP 29 SOUTH, RANGE 38 EAST, BREVARD COUNTY, FLORIDA



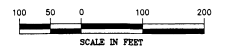
MATCH LINE
SEE SHEET 7 OF 7

EASEMENT
LINE TABLE

LINE	DIRECTION	DISTANCE
E61	S 08°36'25" E	150.00'
E62	S 08°36'25" E	150.00'
E63	S 08°36'25" E	150.00'
E64	S 08°36'25" E	150.00'
E65	S 08°36'25" E	150.00'
E66	S 72°21'41" W	136.21'
E67	S 45°06'14" W	143.89'
E68	S 20°45'45" W	138.40'
E69	S 08°36'25" E	150.00'
E70	S 03°51'53" E	110.97'
E71	S 06°31'25" E	277.39'
E72	S 43°20'58" E	111.21'
E73	N 69°50'11" W	53.50'
E74	N 85°18'22" E	38.50'
E75	S 75°28'58" E	82.80'
E76	S 60°38'42" E	27.18'

NATURE &
CONSERVATION PRESERVE
LINE TABLE

LINE	DIRECTION	DISTANCE
NP75	N 60°38'42" W	18.80'
NP76	S 16°41'01" E	98.30'
NP77	S 06°36'25" E	73.82'
NP78	S 48°15'58" E	45.21'
NP79	S 08°36'25" E	109.83'
NP80	S 34°21'14" W	14.41'
NP81	N 09°53'20" W	61.73'
NP82	N 16°58'05" E	48.76'
NP83	N 16°58'05" E	48.85'
NP84	N 42°25'09" E	64.08'
NP85	N 64°50'29" E	71.50'
NP86	N 85°45'53" E	40.82'
NP87	S 68°13'13" E	29.10'
NP88	S 42°59'55" E	54.93'
NP89	S 85°16'22" W	35.77'
NP90	N 09°23'20" W	7.64'
NP91	N 88°21'18" W	57.80'
NP92	N 60°38'42" W	70.24'
NP93	S 34°21'14" W	108.56'
NP94	S 46°08'45" W	37.86'
NP95	S 16°41'01" E	45.65'
NP96	S 48°15'58" E	38.50'
NP97	S 06°36'25" E	115.24'
NP98	S 16°41'01" E	73.18'
NP99	N 22°18'43" E	30.12'
NP100	N 44°02'21" W	45.62'



CURVE TABLE

CURVE	RADIUS	LENGTH	CHORD	BEARING	DELTA
C18	420.00'	414.36'	397.78'	N 19°39'28" E	56°31'42"
C19	300.00'	402.07'	372.85'	S 36°13'53" E	76°37'24"
C20	550.00'	1450.47'	1065.21'	S 68°36'38" W	151°06'59"
C23	850.00'	1239.48'	993.35'	S 77°56'04" W	129°07'17"
C24	550.00'	215.00'	209.71'	S 02°23'00" E	21°38'50"
C109	25.00'	21.03'	20.41'	S 24°15'30" W	48°17'33"
C110	50.00'	241.19'	66.87'	N 89°59'50" W	276°22'46"
C111	25.00'	21.03'	20.41'	N 23°55'52" E	48°17'33"
C213	25.00'	37.18'	33.88'	N 34°00'59" W	85°11'11"
C114	25.00'	37.18'	33.88'	N 60°45'48" E	33°11'11"
C215	875.00'	172.82'	171.91'	S 00°00'24" E	171°51'01"
C216	275.00'	368.37'	341.59'	S 36°13'53" E	76°37'24"
C223	325.00'	435.58'	403.70'	S 36°13'53" E	76°37'24"
C282	525.00'	1384.54'	1016.79'	S 68°36'38" W	151°06'59"
C283	575.00'	1241.84'	1016.89'	S 67°28'28" W	124°20'28"
C284	445.00'	438.05'	431.46'	N 19°39'28" E	56°31'42"
C285	395.00'	389.72'	374.10'	N 19°39'28" E	56°31'42"