

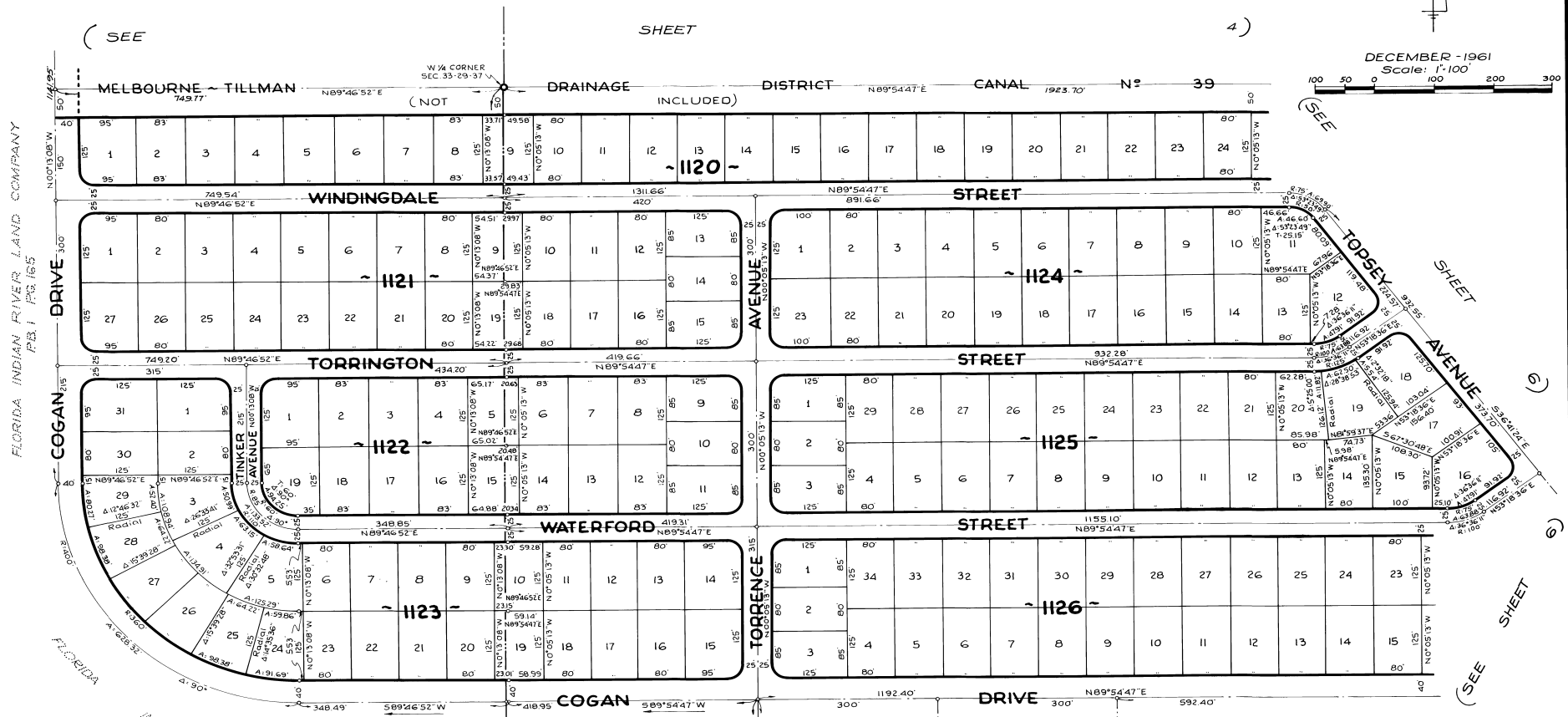
PORT MALABAR UNIT TWENTY THREE

A RESUBDIVISION OF PORTIONS OF THE FLORIDA INDIAN RIVER
LAND COMPANY, PLAT BOOK 1, PAGE 165, IN SECTIONS 29, 32 AND 33, AND
A RESUBDIVISION OF A PORTION OF MELBOURNE POULTRY COLONY -
ADDITION N^o. 2, PLAT BOOK 6, PAGE 10, IN SOUTH 1/2 OF SECTION 33,
ALL IN TOWNSHIP 29 SOUTH, RANGE 37 EAST
CITY OF PALM BAY, BREVARD COUNTY, FLORIDA
SHEET 5 OF 10 SHEETS

PLAT BOOK 16
Page 23



DECEMBER - 1961
Scale: 1"=100'



(SEE SHEET 4)

(SEE SHEET 4)

(SEE SHEET 6)

(SEE SHEET 6)

(SEE SHEET 6)

(SEE SHEET 6)

(SEE SHEET 6)

(SEE SHEET 10)

(SEE SHEET 10)

(SEE SHEET 6)

FLORIDA INDIAN RIVER LAND COMPANY
P.B. 1 PG. 165

MELBOURNE POULTRY COLONY
ADD NO. 2 P.B. 6 PG. 10
P.B. 1 PG. 165

MELBOURNE POULTRY COLONY
ADD NO. 2 P.B. 6 PG. 10

CALCULATED BY - R.G.
DRAWN BY - V.M.F.
CHECKED BY - J.B.
APPROVED BY - C.G.H.

ARTHUR L. DAY
CIVIL ENGINEER
MIAMI - FLORIDA

SHEET 5 OF 10 SHEETS
180 LOTS THIS SHEET