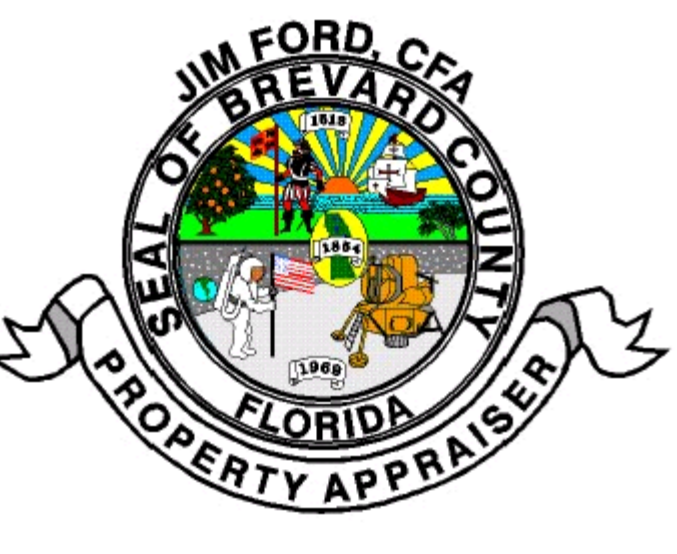
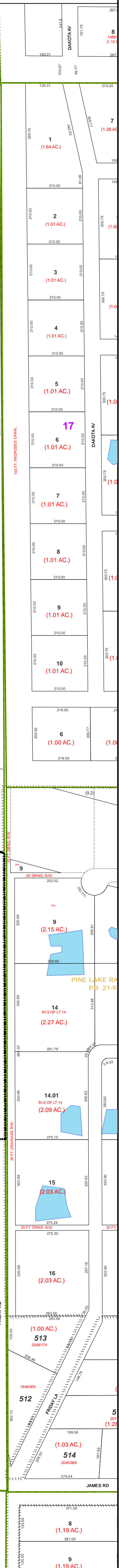
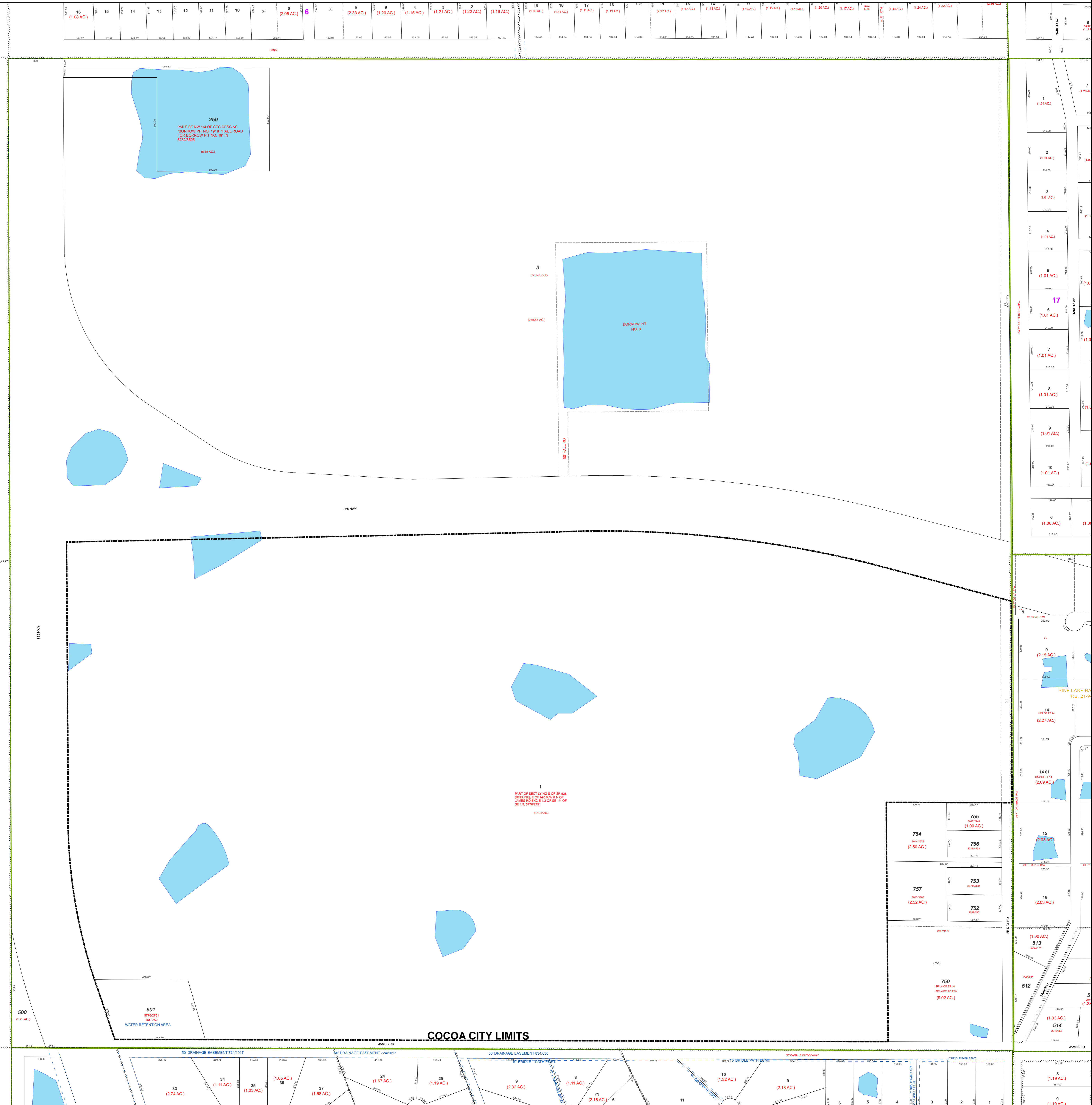
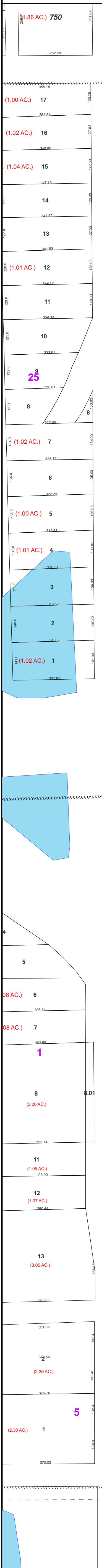


TOWNSHIP: 24 RANGE: 35 SECTION: 10



- Legend**
- Parcels
 - Condos
 - Subdivisions
 - Easements
 - History
 - Hidden/Vacant
 - Reference Lines
 - Water
 - City Boundary

Brevard County Assessor's Plat
 Map Section: 24 3510
 Print Date: Feb 22, 2010
 Scale: 1 : 2400

0 100 200 400 600 800 Feet

Assessment Map
 Office of
JIM FORD
 Property Appraiser
 Brevard County, Florida
 Property Appraiser's Office - Geographic Information Services:
 P.O. Box 429, 400 South St, Titusville, FL 32781 (321-264-6707)

GENERAL DECLARATION
 This map was compiled from recorded documents and global positioning collected data with sub-meter accuracy and DOES NOT REFLECT AN ACTUAL SURVEY. The Brevard County Property Appraiser does not assume responsibility for any errors or omissions contained herein. This map was prepared only for the expressed and official use by the Brevard County Property Appraiser. All dimensions hereon are electronically generated by computer, and thus, in some instances will not represent the actual dimensions. Such deviations, within recorded plats are extremely small, measured in "hundreds-of-a-foot". Un-surveyed parcels will show a computer-generated dimension for assessment purposes only and does not represent a survey. For actual measurements users of this map are advised to consult the plat of record, the official record book and page, or other applicable record as referenced hereon or consult a private surveyor.